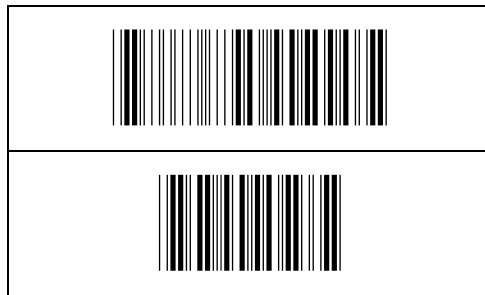
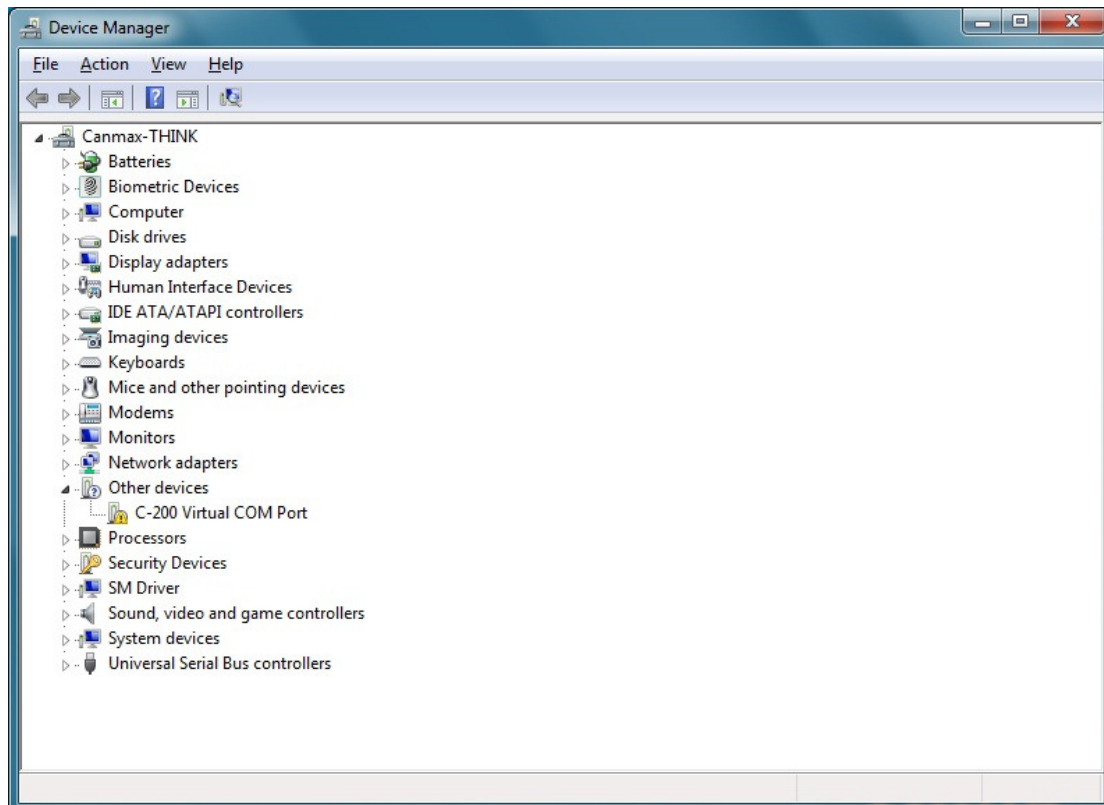


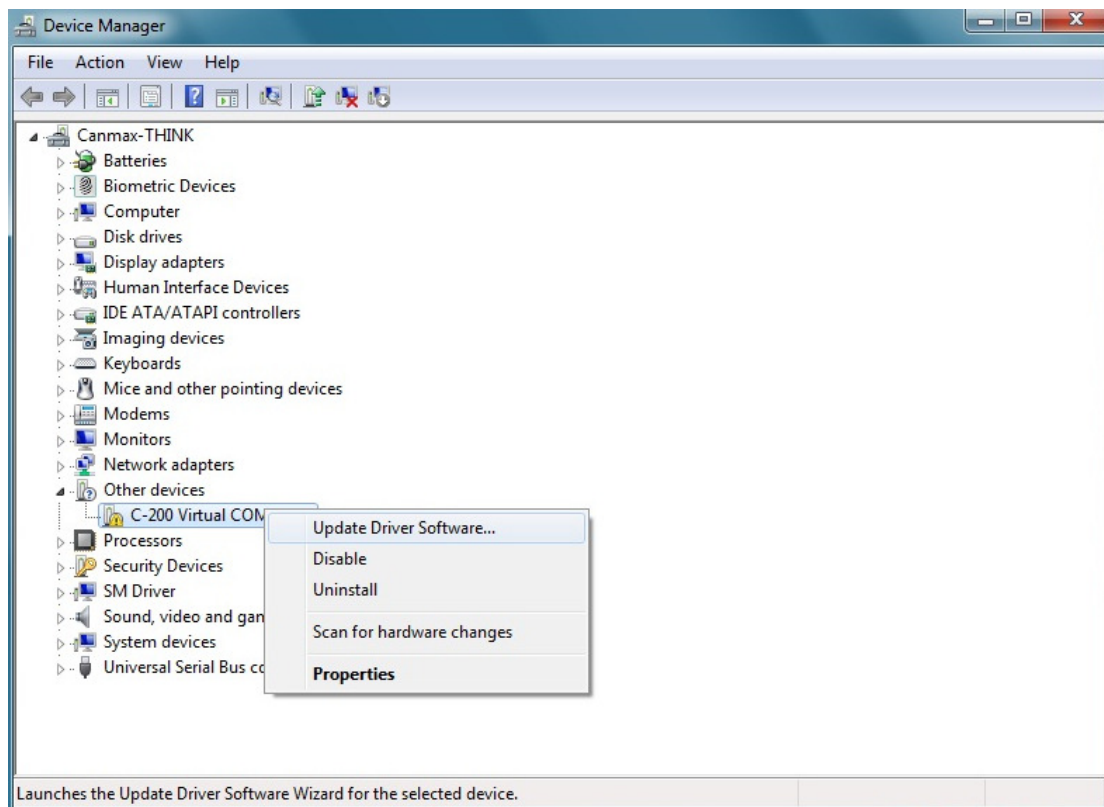
1. Connect your device to PC, and scan the barcodes below to into ISP mode.



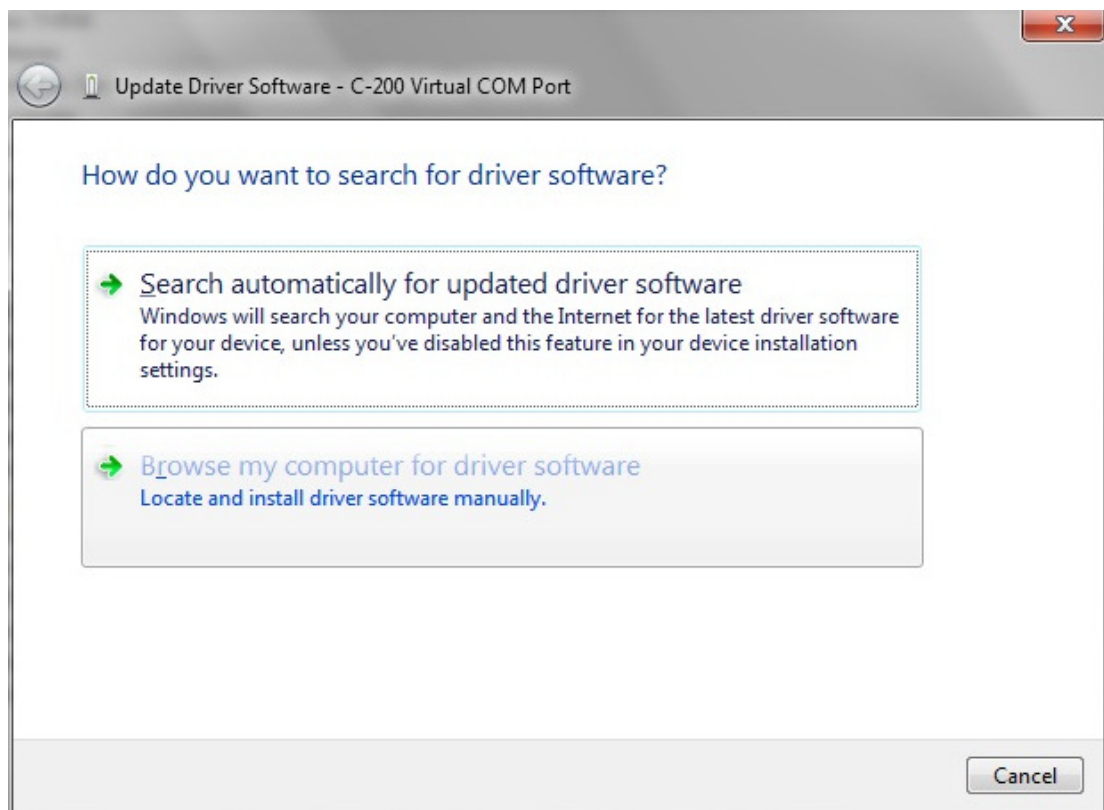
2. Open “Device manager” the picture is showed as below:



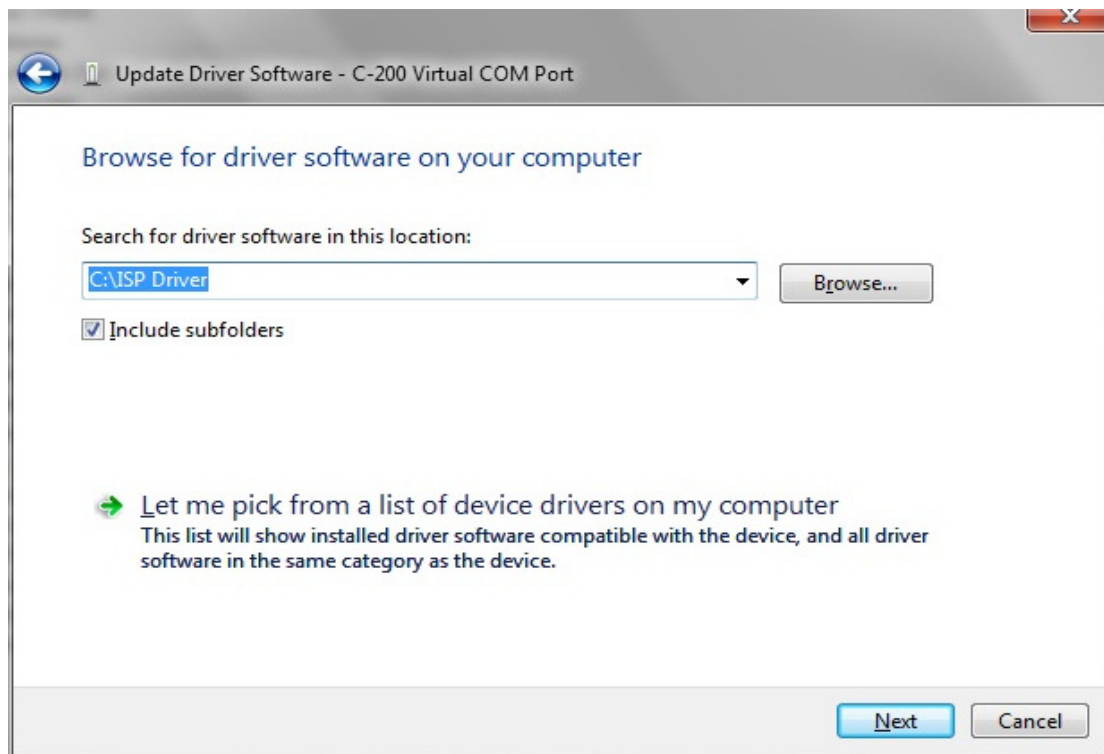
3. After the device has been found. Right click and you'll see the context menu as the picture below:



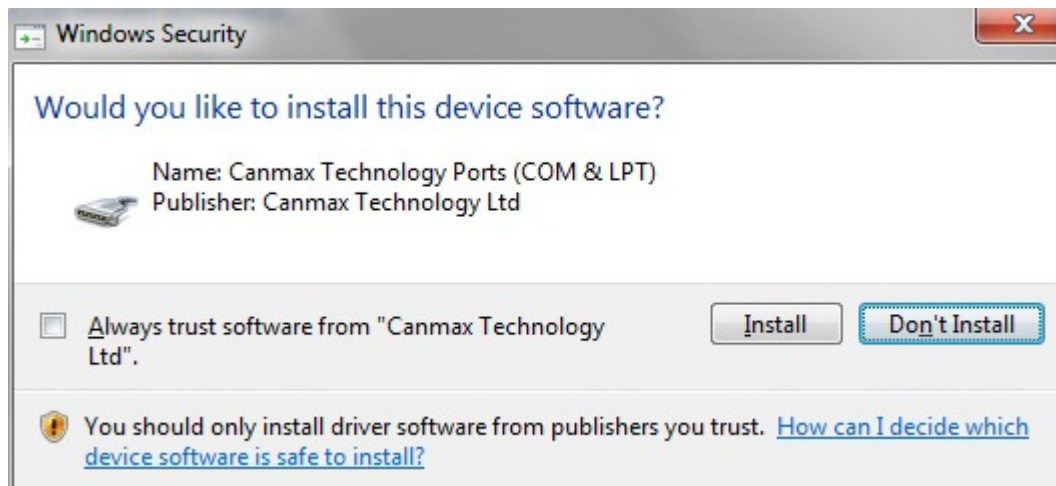
4. After left click on "Update Device Software". Select "Browse my computer for driver software":



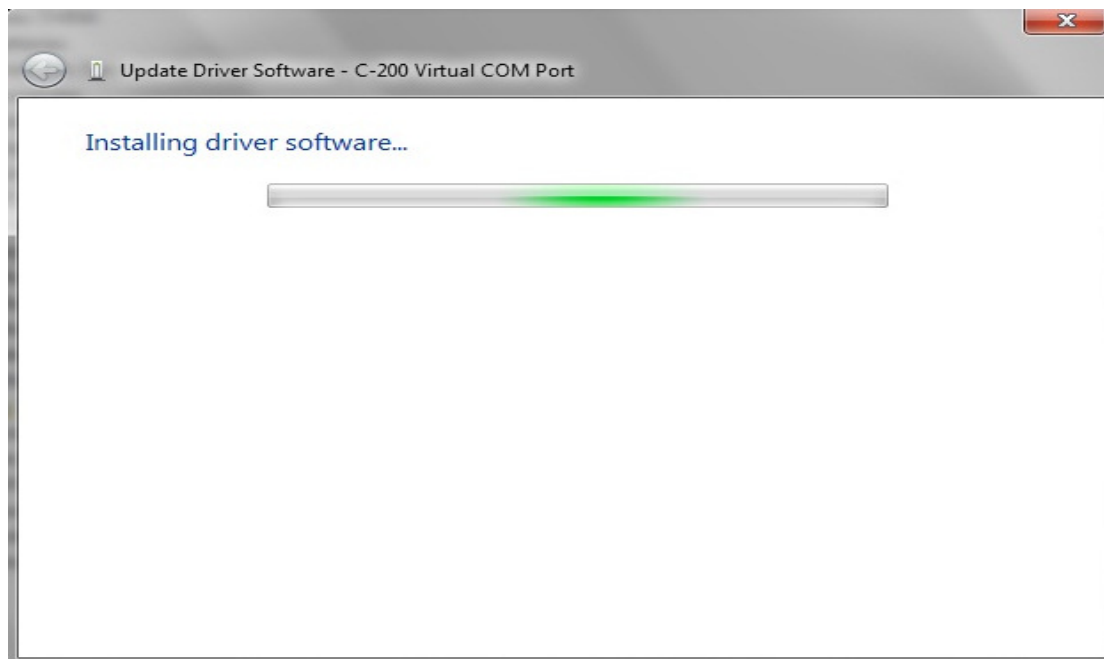
5. Press "Browse". Choose the directory where the ISP driver(C0801b.inf) is. Click next:



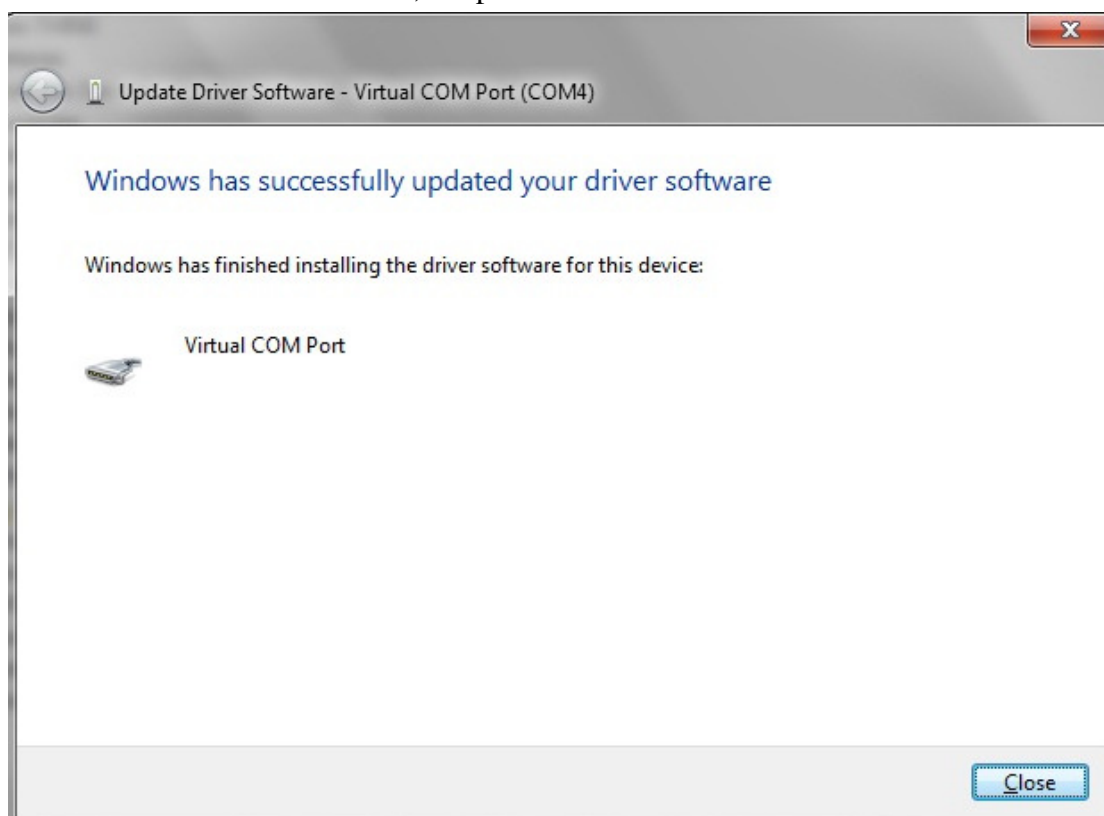
6. Then click "Browse" to choose the location of Driver("C0801b.inf"), and then click "Next", the picture is showed as below:



Then Click "Install" to continue the ISP Driver installation, the picture is showed as below:

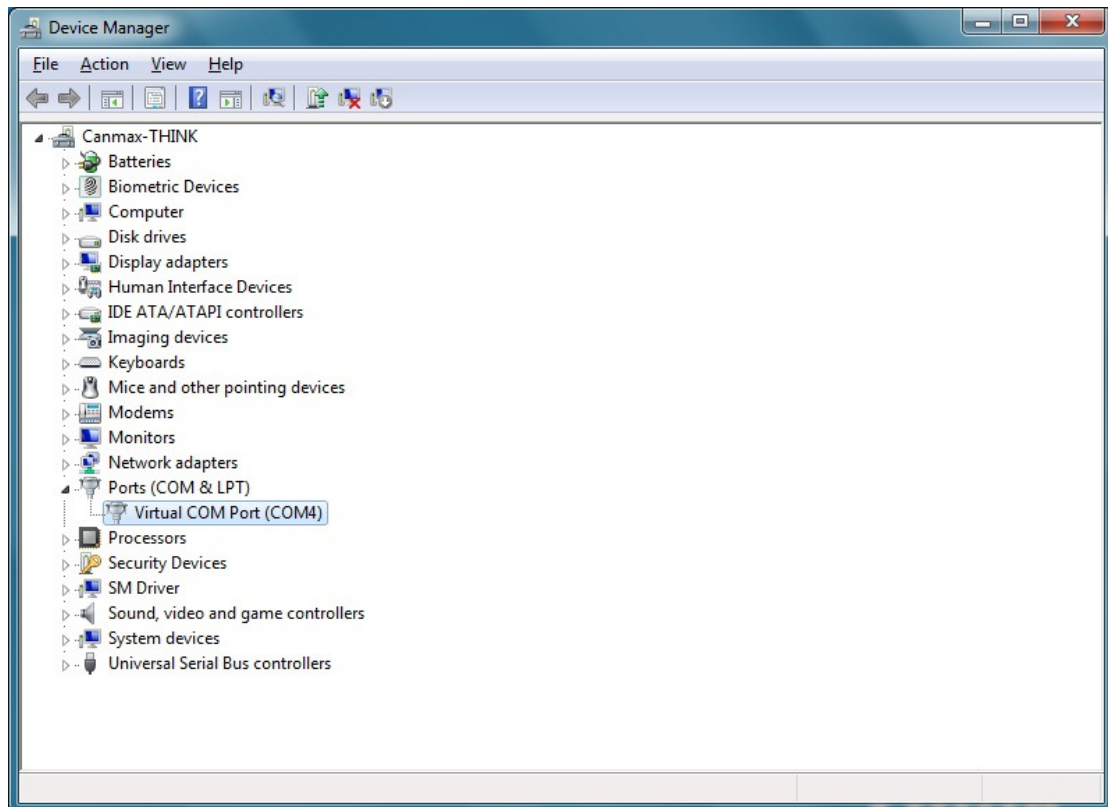


After the installation is finished, the picture is showed as below:



Then press "Close" to close the window.

Open "Device Manager", the picture is showed as below:



In this picture, we could know the COM Port of our product is COM4

(Note: In this case the COM4 is the example. It doesn't have to be COM4)