

Nexa SD 300

Entry Level Barcode Scanner



2

year warranty



Black available

- All in one USB, Keyboard Wedge and RS232 interfaces*
- Good on hard to read barcodes
- Up to 25mm scan range
- 80mm wide scan window
- Available in black or light grey
- Rugged and Reliable CCD scanning engine
- 2 year warranty



USB, Keyboard Wedge and RS232 in each scanner*

* Either USB, Keyboard Wedge or RS232 interface cable supplied. Interface change can be done by replacing the cable.

NEXA

Nexa SD 300

Entry Level Barcode Scanner

GENERAL

Interface	TTL, Keyboard, RS232 Interface & Wand Emulation
Code Read	UPC/EAN/JAN & Addon 2/5, Code 39, Code 39 Full ASCII, Interleave 25, Industrial 25, Matrix 25, Code 11, Code 128, Codabar/NW7, Code 93, MSI/PLESSEY, Code 32, BC 412, China Postage
Programming	User's Manual

OPTICAL

Width of window	80 mm
Depth of Field	25mm/0.5 mm (20 mil) width code
Light Source	Red LED 660 nm
Resolution	0.127 mm (5 mil) / PCS 0.9
Scan Speed	50 Scans per Second
Ambient Light	800 lux Max. (Sunlight)
PCS	0.45/0.25 mm (10 mil) width code



ELECTRICAL

Voltage	DC 5V 5%
Power Consumption	40mA typical @5 VDC / TTL Type
Reading Indicator	Beeper & LED

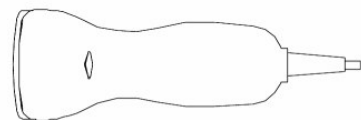
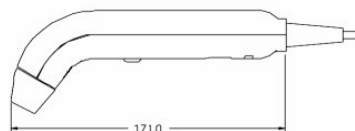
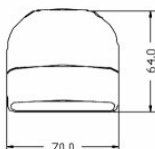


ENVIRONMENT

Operating Temperature	0 to 40 (32 to 104)
Storage Temperature	Minus 20 to 60 (-4 to 140)
Relative Humidity	20% to 85% (Non-condensing)

PHYSICAL

Housing Material	ABS Plastic & Rubber
Cable	Straight, 5 ft.
Connector	RJ-45 Phone Jack Connector
Weight	Approx. 150g
Dimension	174 mm x 90 mm x 66 mm



NEXA